



Student Newsletter

December 2024



Dear Fielding Students,

The recent elections have been marked by divisive and polarizing commentary. As the proposed political platforms become more salient, let's pause for a moment of reflection on community connection and self-care. In times like these, we are reminded of the importance of reaching out to others, prioritizing our own well-being, and supporting one another.

It is essential to remember that our strength lies in the shared commitment to a common purpose. We are bonded by our dedication to social justice and our desire for Fielding to continue to thrive.

Together, we will create the future of Fielding that honors our differences and centers our collective strength to focus on mutual respect and care.

Our community is one of resilience, support, and collaboration. In this time, we must continue to create spaces of dialogue while maintaining an environment of respect. As we rely on our rich diversity, it is necessary to also uplift each other. Together, as a Fielding community, we will move forward in a spirit of empathy, collaboration, and inclusiveness.

While we continue to make meaning of the coming days ahead, we can strengthen the bonds of our community and remember the importance of well-being. Keep in mind, it is okay to seek support, take moments to breathe, and to reach out to each other. Further, remember the support systems available to you. Our All One Health (AOH) Student Assistance Program provides mental health support, legal referrals, and other services.

As you continue your own reflection, I encourage you to commit to positive connections and open dialogue while centering compassion. Collectively, we can move forward as a strong, inclusive and supportive community.

I wish you a restful winter break ahead.



Sincerely,

Dr. Cherjanet Lenzy
Associate Provost for Student Life and Thriving
Fielding Graduate University

Share Your Voice: Fielding Graduate Student Experience Survey Launched

We have launched our Graduate Student Experience Survey. Your graduate journey matters, and we want to hear from you!

Now through December 20, 2024, you have the opportunity to share valuable insights about your Fielding experience. The survey is now open and ready for your participation. Take the survey [here](#).

As part of our ongoing Justice, Equity, Diversity, and Inclusion (JEDI) initiatives, we've partnered with Jernigan & Associates, Inc. to conduct this confidential survey. Your responses will directly influence the future of our graduate programs and enhance the student experience.

Key Details:

- 100% anonymous participation
- Responses will be aggregated across survey items into overarching themes
- No individual feedback will be attributed to specific students

- Jernigan & Associates, as our external consultants, will manage all data collection and analysis

Survey Period: Now through December 20, 2024

Your insights are invaluable in making Fielding an even better place for current and future students.

Thank you for your participation!

The graphic is titled "Well-Being Corner" in the top right. The main heading is "Looking for a long-term therapist? Check out these options". It features six dark green buttons arranged in a 3x2 grid, each with an icon and text. The buttons are: Psychology Today (brain icon), National Queer and Trans Therapists of Color Network (heart with pulse icon), Therapy for Black Girls (hand holding heart icon), Mental Health Match (person meditating icon), Inclusive Therapists (hands holding heart icon), and Therapy Den (plant icon). A small number "1" is in the bottom left corner.

Well-Being Corner

**Looking for a long-term therapist?
Check out these options**

- Psychology Today**
<https://www.psychologytoday.com/us>
- National Queer and Trans Therapists of Color Network**
<https://nqtcn.com/en/mental-health-directory/>
- Therapy for Black Girls**
<https://therapyforblackgirls.com/>
- Mental Health Match**
<https://mentalhealthmatch.com/>
- Inclusive Therapists**
<https://www.inclusivetherapists.com/>
- Therapy Den**
<https://www.therapyden.com/>

1

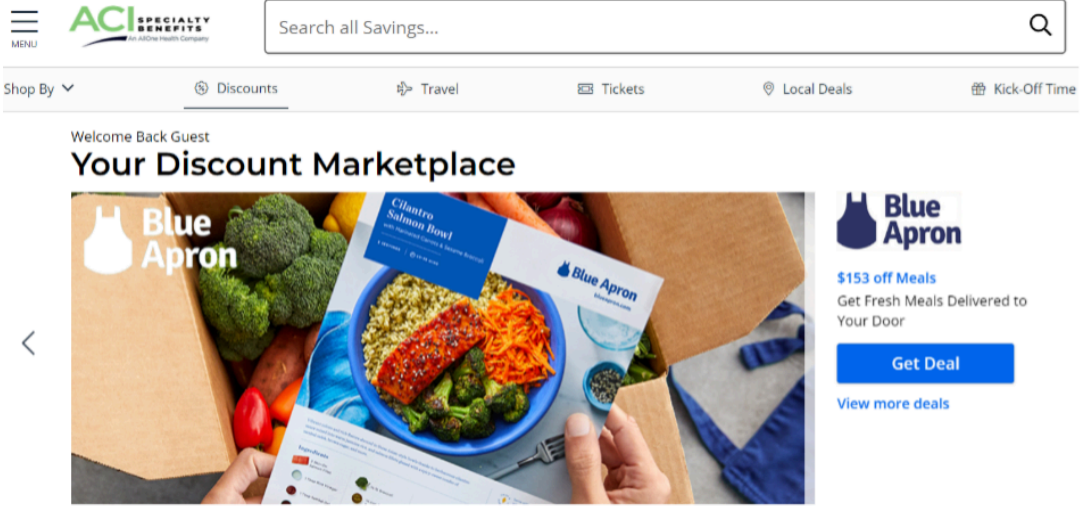
Student Well-Being Resources

Did you know that through your Student Assistance Program you can access resources to support your well-being? Short term counseling, legal advice, financial consultations, and more are just a click away. All services are free and confidential for you and family members. For more information visit:

<https://acistudents.mylifeexpert.com/>.

Check out these directories to find potential options.

- **Psychology Today**
<https://www.psychologytoday.com/us>
- **Therapy for Black Girls**
<https://therapyforblackgirls.com/>
- **Inclusive Therapists**
<https://www.inclusivetherapists.com/>
- **National Queer and Trans Therapists of Color Network**
<https://nqtcn.com/en/mental-health-directory/>
- **Mental Health Match**
<https://mentalhealthmatch.com/>
- **Therapy Den**
<https://www.therapyden.com/>



Did You Know that ACI offers access to a Discount Marketplace through the online Member Portal?

BenefitHub's Discount Marketplace provides access to the world's largest selection of global, national brands, and local deals across 15 countries that include over 1,000 vendors, covering national discounts, local deals, hotel & travel deals, insurers, and other benefit providers and many more. Whether you are planning a dream vacation, a festive party, or simply want an stress-free holiday, using your benefit allows you to focus on enjoying the season with loved ones while also saving money.

To Access the Marketplace:

- Register for the online portal at and use the code: FGUY14439
- Click on "Discounts"
- Register for BenefitHub
- Start saving!

Student Events and Deadlines

Post-Event Reflection Questions: "Honoring Ourselves and Each Other: A Discussion on Post-Election Well-Being in a Changing World"

On Dec. 3, the Office of Student Life and Thriving and the Office of Inclusive Excellence and Reflective Engagement hosted the event, "Honoring Ourselves and Each Other: A Discussion on Post-Election Well-Being in a Changing World." The event brought Dr. Carlton Green and Dr. Kevin Henze of Jernigan and Associates to facilitate the conversation. Students expressed their feelings post-election and discussed ways to navigate transitions. Participants were led to reflect on their

plans of resilience and self-care, while also thinking about their networks of support. For continued reflection, students are encouraged to explore the reflection questions provided below.

Reflection Questions

1. What do I need to take care of my well-being?
2. What support do I need, and who is best equipped to help?
3. What information and/or resources do I need?
4. In what spaces do I feel safe and can show up authentically?
5. Where do I store my stress/anxiety/emotions? What practices do I need to engage to navigate this?
6. Where do you find my communities of care?

Virtual New Student Orientation

In case you missed it, the virtual New Student Orientation (NSO) is available on Moodle. Get the most up-to-date resources to support you through your scholarship and practice.

Access NSO: <https://learning.fielding.edu/course/view.php?id=7258>

Student Town Halls

Student Town Halls 4 p.m. PT | 7 p.m. ET

Join Student Life & Thriving for Student Town Halls. This student-only space provides an opportunity for students to discuss needs and concerns in a private space with Dr. Lenzy, Associate Provost for Student Life and Thriving. Additionally, students will receive university updates and announcements. Sessions are **not recorded** to provide privacy for attendees. Should there be a designated theme for the meeting, this will be published ahead of the meeting date. Please join us, see the list of dates below.

- February 26
- April 16
- June 18

Student Life and Thriving Website

The Office of Student Life and Thriving has a new website! Find resources to support your student journey, connect with your advisor or writing coach, learn about upcoming programming and more!

Also read details about the office and its goals by visiting <https://www.fielding.edu/about/office-of-the-provost/student-life-and-thriving/>

The **Black Student Association (BSA)** works to attract Black Scholars and support them throughout their graduate career, including providing opportunities for professional development, visibility within the Fielding community, and an empathetic environment where they feel seen, understood, and encouraged. Learn more about BSA meetings and initiatives by emailing them at bsa@fielding.edu.

University Events & Deadlines: Upcoming &

Previous Events

President Katrina S. Rogers, Ph.D., Retirement Celebration

January 9, 2025 | 4:30 p.m. – 6:30 p.m. PT
Hilton Santa Barbara Beachfront Resort
Reagan Room
633 E Cabrillo Blvd, Santa Barbara, CA 93103

Please join us in celebrating the extraordinary legacy of President Katrina S. Rogers, Ph.D., and her visionary leadership at Fielding Graduate University. The evening will feature a cocktail reception, presentations, a hosted bar, appetizers, and live music.

Fielding University Press Tenth Anniversary Celebration

January 10, 2025 | 10 a.m. – 12 p.m. PT | 1 p.m. – 3 p.m. ET
Hilton Santa Barbara Beachfront Resort
San Rafael Room
633 E Cabrillo Blvd, Santa Barbara, CA 93103
Zoom ID: 891 1424 4258

A decade ago, President Rogers supported the vision of establishing Fielding University Press. Join President Katrina S. Rogers, Ph.D., and Faculty Emeritus Jean-Pierre Isbouts, D.Litt., for an inspiring conversation on the journey of book publishing and the pivotal role a university press plays in academic and intellectual life. Event host: Pauline Albert, Ph.D. (HOS, '09). Featured speakers: Rich Appelbaum, Ph.D.; Valerie Bentz, Ph.D.; Terry Hildebrandt, Ph.D.; Laura McGuire, Ph.D.; Keith Melville, Ph.D.; Judith Stevens-Long, Ph.D.; and Kjell Rudestam, Ph.D.

Fielder Fellows Webinar

Jan. 13, 2025 | 3 p.m. PT | 6 p.m. ET

Register here: <https://fielding-edu.zoom.us/meeting/register/tZEtcOqurjgjG9RsCSXt16i94cYqFdXSVWNL#/registration>

Stay tuned for more information soon!

President Katrina S. Rogers, Ph.D.'s Virtual Retirement Celebration

January 28, 2025 | 11 a.m. – 12 p.m. PT | 2 p.m. – 3 p.m. ET
Zoom ID: 810 9707 3654

Honor the lasting impact of President Katrina S. Rogers, Ph.D., and her exceptional contributions to Fielding Graduate University.

President Rogers Issues Statements in October, November

Read President Katrina S. Rogers, Ph.D.'s Veterans Day statement in our Newsroom here: <https://www.fielding.edu/statement-from-the-president.../>

Read President Katrina S. Rogers, Ph.D.'s Indigenous Peoples' Day statement in our Newsroom: <https://www.fielding.edu/indigenous-peoples-day.../>

Academic Resources

Updates to Library's Authentication System

The Dr. Dianne Kipnes Library is in the process of changing its authentication system to a service called OpenAthens. Please be sure to **save and review the information** in our [OpenAthens Library Guide](#) to learn more. At a minimum, please look at the first two tabs of the guide to **watch the overview video and read through the transition checklist**.

How you access the library and search for resources is not changing. Faculty and students will still log in to Moodle to utilize our resources. However, **the log-in screen you will see for authentication (such as when your session times out or you follow a saved link) and the URLs to our resources will change**.

For some, you will not need to take any action other than educating yourself about the change. For others, there are some cases where you might need to take action in advance. [Review the transition checklist](#) to be sure you understand. The 'Go Live' date for implementation of the new service is scheduled for the term break, the week of Dec. 16, so we can test and troubleshoot without disrupting your work.

Please don't hesitate to reach out to the library with any questions as they come up: library@fielding.edu. We are here to help! We will post announcements to our forum to help remind you that the change is coming and will send at least one additional email announcement.

Fielding Scholarship Opportunities Available Every Term

To support our students' academic journeys, Fielding Graduate University offers scholarship opportunities every term to support our students' academic journeys. Faculty can encourage students to check for announcements and instructions regarding available scholarships.

For more information on the specific scholarships available, visit the [Financial Aid & Scholarships page](#) within the Student Services section on MyFielding.

Other Student Resources:

- [Student Services on MyFielding](#) (requires login)
- [One-Stop Student Center](#)
- [Advising](#) (requires MyFielding login)
- [Library](#) (requires Moodle login)
- [Writing Center](#) (requires Moodle login)
- [Academic Technology Support and Help Desk](#)
- [IRB](#) (requires MyFielding login)
- FORs

Student Support Resources

To bring greater awareness of student support resources, you can access the new **Student Support Resources** block on every page in Moodle. Learn about tools and resources to support your success,

including Fielding's **Student Assistance Program**, **Advising** services, **Library** resources, **Writing Support**, and more! [Student Support Resources](#)

Moodle Welcome Section

We are always working to improve the student experience in Moodle. One of the new features in is a new Welcome Section that has been implemented in the Media Psychology, Evidence Based Coaching, and Organization Development and Leadership programs. The Welcome Section provides students with more consistency from course to course, clarifies how to get started and where to find various course components, and provides information on academic support services and resources that can help learners succeed. We will be seeking feedback from students on the Welcome Section in the upcoming months since this layout will be implemented in other programs.

News and Achievements, Accomplishments and Recognition

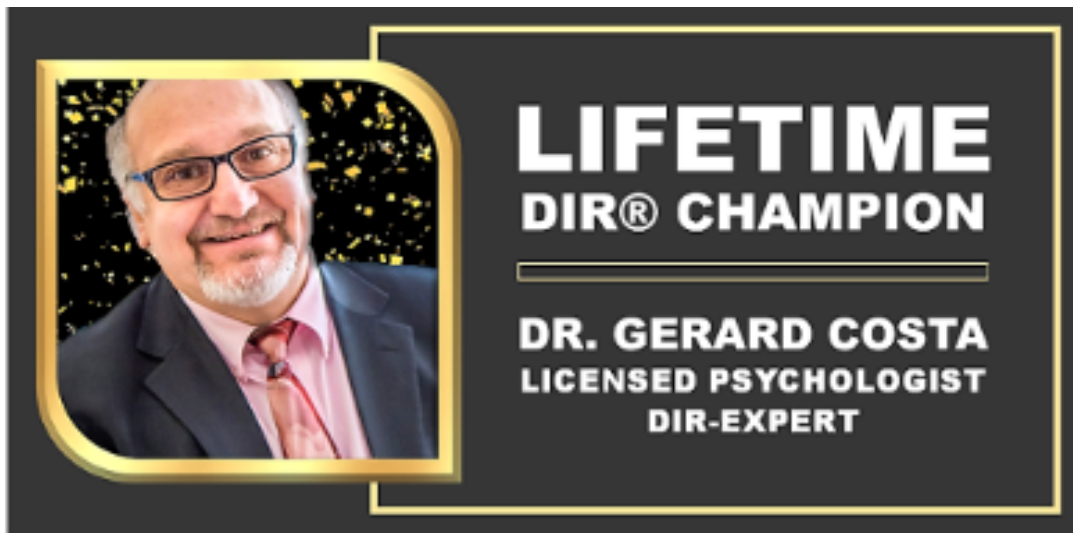
Carolyn Ibrahim, Ph.D., OTR Lead Author and Jenene Craig, Ph.D., IECD Program Director

- “Oral Motor Interventions Used to Support the Development of Oral Feeding Skills in Preterm Infants: An Integrative Review” in the journal, *Early Human Development* journal

Jenene Craig, Ph.D., IECD Program Director and **Carolyn Ibrahim, Ph.D.**, IECD Associate Faculty were accepted for the Plenary Session in the National Association of Neonatal Therapists (NANT) Annual Conference in March 2025. They will present “Thriving Together – Building the Optimal Neonatal Therapy Team for Your Unit.”

Christy Gliniak, Ph.D., IECD Associate Faculty

- Publication – [Neonatology Today](#) - “Celebrating the Distinct Contributions of Neonatal Therapists Within Interprofessional Neonatal Care.”
-
- Invited researcher at the University of Utrecht at Wilhelmina Children's Hospital, Netherlands.
 - Collaborating on a Sleep Well Baby research Project.
 - September 2023, assisted with validating the new BeSSPI neonatal sleep scoring system.
 - Working on developing an eLearning course that will assist others in both the Global North and Global South to identify between Active Sleep and Quiet Sleep while babies are being cared for in the NICU
- November –completed NeuroRelational Framework (NRF) training Certificate



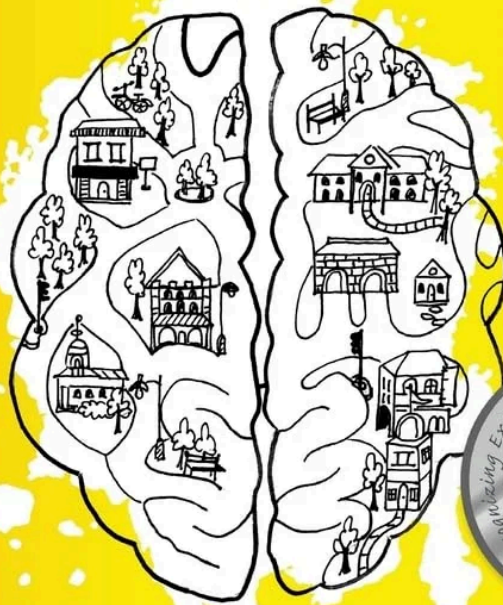
Gerry Costa, Ph.D., IECD Associate Faculty

- 2024 Lifetime DIR Award from the International Council on Development and Learning (ICDL)- <https://www.icdl.com/about/news/2024-champions>
- “We are pleased to recognize Dr. Gerard "Gerry" Costa as the 2024 Lifetime DIR Champion. Gerry has exhibited a longstanding and steadfast commitment to DIR over the last 30 years. Gerry first connected with Dr. Greenspan in the early 1990s and became a part of Dr. Greenspan and ICDL's senior clinician group later in the 1990s. Over the last 30 years, Gerry has been a leader in the continued growth of DIR. He has generously served on the Board of Directors of ICDL for 14 years and was the Board President for 10 of those years. Gerry has promoted DIR in the programs he has led, in the publications he has authored, and in his many teaching and training endeavors. One nominator noted, ‘Gerry has been an integral part of my professional formation and for my love of DIR. He has positively impacted countless professionals with his deep DIR knowledge and his warm compassionate soul.’ Gerry has dedicated his career to advancing developmental perspectives and has championed DIR in more ways than can be fully captured. In addition to all the work he has done, he is also one of the most beloved people in the DIR community. Not only has he championed DIR, he has lived out its core values and principles in every aspect of his life. Please join us in congratulating Dr. Gerard Costa, the 2024 Lifetime DIR Champion!”

“Fascinating and powerful! *Healing Your Map* takes readers on a profound journey to discovering their worldview, how it was shaped, and how it has affected their life.”

-DR. MARSHALL GOLDSMITH is the Thinkers50 #1 Executive Coach and New York Times bestselling author of *The Earned Life*, *Triggers*, and *What Got You Here Won't Get You There*.

Healing YOUR MAP



JODEE GIBSON, MA | PCC

a guide to understanding
discernment, trauma and human behavior

Jodee Gibson, MA, PCC, HOD Ph.D. Student[KS1]

- Published book on mental health - [Healing Your Map: A Guide to Understanding Discernment, Trauma and Human Behavior](#)

Marva L. Lewis
Deborah J. Weatherston *Editors*

Therapeutic Cultural Routines to Build Family Relationships

Talk, Touch & Listen While Combing
Hair©

 Springer

Marva Lewis, Ph.D.

- Presentation at Dr. David Blake Willis' Ethnography Salon in July 2024 on Attachment Theory, Reflective Practice and Trauma Informed Care founded in Marva's book: [Therapeutic Cultural Routines to Build Family Relationships: Talk, Touch & Listen While Coming Hair](#)

Using Little Moments of Big Connection
to Raise Calm and Confident Kids



Tina Payne Bryson, PHD

New York Times bestselling co-author of *The Whole-Brain Child*

and Georgie Wisen-Vincent, LMFT

Georgie Wisen-Vincent

- Georgie has an upcoming book release called [“The Way of Play”](#)



Routledge Research in Speech-Language Pathology

NEONATAL OPIOID WITHDRAWAL SYNDROME

SPEECH-LANGUAGE PATHOLOGISTS AND
INTERPROFESSIONAL CARE

Edited by
Brenda Louw



**Jenene Craig Ph.D., Christy Gliniak Ph.D., MBA, OTR/L, CNT,
IECD Program Director and Christy Gliniak, Ph.D., IECD
Associate Faculty**

- "The Role of Occupational Therapy and the Interprofessional Approach to Mitigating Developmental Sequelae Associated with Neonatal Opioid Withdrawal Syndrome" book

Student News & Achievements

Clinical Psychology Doctoral Student Research: Age-Based Biases in the Diagnoses of Older Adults

Clinical Psychology doctoral student Grier Potter presented a poster at the New England Psychological Association (NEPA) Conference at Springfield College in Springfield MA. The paper shared findings from a Fielding research team about age-based biases in the diagnoses of older adults and was very well received. As one of the region's most renowned associations for psychology technology and research, NEPA has been fostering psychological knowledge since 1963. Partnering with NECTOP, NEPA is a leader in advancing educational standards in the field of psychology.

Read more in our Newsroom [here](#).



Ph.D. Candidate Sarah Barker Selected as Panelist at this Year's International NZ Web Fest

Media Psychology Ph.D. candidate Sarah Barker has been selected as a panelist for this year's international [NZ Web Fest](#) in the Online Creator Conversation' where her work has been officially selected in the non-fiction documentary podcast category. This selection is for her project "VR: A Path to Mental Wellness," exploring how virtual reality can be a powerfully effective tool for working with chronic pain, PTSD symptoms, depression, and other human ailments. The show is practicum work for a Ph.D. in Psychology with an emphasis in media and technology at [Fielding Graduate University](#).

Read more in our Newsroom [here](#).



**HOD student Amanda M. Leftwich and
Montgomery County Community College (PA)
Student Success Librarian is co-editor of a
new book Building Our Own**

Critiques, Narratives, and Practices by Community College Library Workers of Color
Editors: Amanda M. Leftwich and Eva M.L. Rios-Alvarado

Where and who are all the BIPOC (Black, Indigenous, and People of Color) community college librarians? BIPOC community college librarians provide unequalled and increasingly necessary support to their institutions. The BIPOC community college librarian is often disembodied and our work runs the spectrum between the visible and invisible. The added labor of being the “only” adds an extra layer of emotional, physical, and cognitive work that often goes unrecognized. The relationship between the library and student success has been thoroughly researched and assessed, however, the role of the community college librarian is often excluded. There is even more exclusion, forced invisibility, and censorship for the BIPOC LIS (library information services) worker.

Librarians, library workers, and libraries are part of the student success pathway. Library departments (services) provide distinct face-to-face and online access points for the campus community. Community colleges have long been the setting of fundamental education, workplace development, and life skills across the country for working class communities. Having been seen as a gateway to economic mobility, community college is an equalizer, unifier, and launching pad for student excellence and innovation. However, the student diversity of our campuses is not always representative of staff and faculty. Interestingly, student services / academic affairs units make up more BIPOC workers than instructional units within the institution. Some of the failures in the community college landscape today are the lack of BIPOC workers in the library department, emotional taxation, extra labor, structural racism, and tokenistic legacies. BIPOC librarian faculty have cultural taxation not captured in our tenure or acknowledged institutionally. BIPOC librarians' work and labor in community colleges deserves to be amplified, documented, and valued. Our unity is our shared community of practice now and into the future.

Building Our Own provides perspectives in the form of critiques, reflections, narratives, frameworks, and pedagogies from a BIPOC lens. Editors are inspired to gather and curate a collection of work to reveal the realities of BIPOC library workers' contributions, critical insights, and lived experiences in the community college setting. *Building Our Own* is part of the [Series of Critical Race Studies and Multiculturalism in LIS](#) with Litwin Books and Library Juice Press under the series editors, Rose L. Chou and Annie Pho. For more information on how to contribute, read and review the submission guidelines.

Litwin Books and Library Juice Press is an independent academic publisher of books about media, communication, and the cultural record. Litwin is interdisciplinary in scope and intention and gathers together works from a range of disciplines, often with a focus on archival studies. Through their Library Juice Press imprint, they publish books that examine theoretical and practical issues in librarianship from a critical perspective for an audience of professional librarians and students of library science. [Series on Critical Race Studies and Multiculturalism in LIS](#)

Amanda M. Leftwich currently works as the Student Success Librarian at Montgomery County Community College. She is a doctoral student in Human and Organizational Development at Fielding Graduate University and holds a Master of Science in Library Science from Clarion University of Pennsylvania. Her expertise and research interests include mindful practice in librarianship, reflective practice, and communities of practice. She is the founder of *mindfulinlis*, a virtual space dedicated to mindful practice in librarianship.



Fielding Graduate University delegation and our Keystone Group partners.

Prophecy of the Rainbow Bridge: A Reflection on my Visit to Shanghai

By: Dr. Okokon Udo

I was part of a recent Fielding Graduate University delegation to Shanghai, China. We hung out with our partner Keystone, whose coaching and consulting programs were inspired and nurtured by seeds sown by Fielding's PhD program in Human and Organizational Systems and its Evidence-Based Coaching Program. It was a business trip but we did a lot more than the traditional business. We partnered in building and nurturing community. We were transformed by the experience. We knew without a doubt that what we co-created will continue beyond the conclusion of our trip.

Read more in our Newsroom [here](#).



Cluster Gathering: San Francisco/Northern California

The San Francisco/Northern California Cluster met at Seland's Market Café (East Sacramento) on Saturday, Nov 2, from 11 a.m.-2:30 p.m. This was an informal get-together just to see and meet everyone who could join us from Northern California. We are hoping to do more of these in the coming terms.

Attending were Elena Akhmetova, Rob Dukes, Tanishia Williams, Veronika Kolesnikov, Kesha Ward (not pictured in the photos), Dr. Kathy Geller, and Dr. David Blake Willis.

Dr. Jenny Edwards Presenting at Two Conferences

Jenny Edwards, Ph.D., Faculty Emerita from the Leadership for Change doctoral program, presented a session at the virtual International Alliance for Invitational Education Conference on Nov. 14-15. Participants will be from the U.S., Hong Kong, and Mainland China. Her topic was "Seven Principles for Using Language to Optimize the Potential of Your Students" and is based on her book, *Inviting Students to Learn: 100 Tips for Talking Effectively with Your Students* (ASCD, 2010). The website is <https://www.invitationaleducation.org/>.

She will also be presenting a session with Ann Pearce, Ph.D., graduate of the Evidence-Based Coaching program, at the Learning Forward conference in Denver, Colorado, from Dec. 8-11. They will be sharing strategies with staff developers and other school professionals on how to evaluate the effects of professional development in schools and districts. Their topic is "Going Deeper in Evaluating Professional Learning." The website is <https://learningforward.org/>.



Annabelle with the inspiration for “The Heroine Archetype” article, HOD students Denise Dziwak and Iris Nafshi at the 15th Annual Qualitative Report Conference on Feb. 29, 2024, in Davie, Florida.

Dr. Annabelle Nelson Publishes Article in Heroism Science

Annabelle Nelson, Ph.D., HOD Faculty, just published an article in *Heroism Science* entitled “The Heroine Archetype.” The catalyst for the article was when Scott Allison, Ph.D., emeritus University of Richmond, invited Annabelle to write a chapter on *The Hero Archetype* and then to present at the Heroism Science conference in Tauranga, New Zealand, 2023. During this same time, Annabelle was working with two HOD students on their narrative research with women participants, sparking her motivation to focus on the heroine archetype, largely left out research.

From the article’s abstract:

“Current research on women’s empowerment affirms the heroine archetype’s strength through relational knowing. The heroine’s cycle of transformation may include navigating the tests of sexism at work and finding self-care amidst societal stereotypes of women as caretakers for others. The heroine archetype’s strengths can help both men and women in achieving balance and power in their lives.”

Nelson, Annabelle L. (2024). The Heroine Archetype. *Heroism Science*, 9(1). DOI: 10.26736/hs.2024.01.10 Available at: <https://scholarship.richmond.edu/heroism-science/vol9/iss1/9>

Media Psychology Faculty Publish Journal Article with Colleagues

Media Psychology faculty published in the peer-reviewed journal, *Psychology of Popular Media*, with the paper, "Qualitative and Quantitative Investigations of Office Fans' Connections with Fictional and Celebrity Couples: Identification, Parasocial Relationships, and Beyond." Perry Reed, Ph.D., Associate Faculty at Fielding, is the first author of the paper about identification and parasocial relationships with fictional and celebrity couples. Dr. Reed collaborated with fellow authors Drs. Karen Shackelford (Core Media Psychology Faculty), J. David Cohen, and M.J. Robbins.

Learn more in our Newsroom [here](#).



Selected Fielding Authors in Print

Transformational Coaching: An Evidence-Based Guide by Kymberly O. Akouris (Author, EBC, '17 and current Human Development Ph.D. Student) and Dr. Astrid E. Emond (Editor, Human Development, '24), Fielding University Press. [Learn more](#).

Blalock, L. D., Weichman, K., & VanWormer, L. A. (2024). Conceptual masking disrupts change-detection performance. *Memory & Cognition*. doi: <https://doi.org/10.3758/s13421-024-01639-z>

Nelson, A. L. (2024) "The Heroine Archetype," *Heroism Science*: Vol. 9: Iss. 1, Article 9. DOI: 10.26736/hs.2024.01.10 Available at: <https://scholarship.richmond.edu/heroism-science/vol9/iss1/9>

Rossi, C., **Colombo, B.**, DeSalve, F., & Oasi, O. (2024). Musical preferences and personality traits: A replication of the music model in an Italian sample. *Music Perception*, 42(2), 124–134. DOI:

<https://doi.org/10.1525/MP.2024.42.2.124>

Stay tuned for more publications in the Jan. 2025 issue of FOCUS Magazine and on our [Newsroom](#) and social media channels!

Events and Other Updates from the VPIE (VP of Inclusive Excellence and Reflective Engagement)

Office of Inclusive Excellence and Reflective Engagement Update

The Office of Diversity, Equity, and Inclusion led by Vice President Allison Davis-White Eyes (adavis-whiteeyes@fielding.edu) has officially changed its name to the VP of Inclusive Excellence and Reflective Engagement (VPIE). This change reflects an ongoing discussion about the office's role in advancing our foundational principles, including the United Nations Declaration of Human Rights, while responding to the Fielding community's call for more opportunities for critical reflection and meaningful dialogue. The new name is intended to better capture the office's mission to foster learning and engagement across the institution, emphasizing our shared humanity. This shift underscores our collective commitment to engaging with diverse perspectives, celebrating the plurality of lived experiences, and fostering communication across lines of difference. In short, our goal is to uphold Fielding's institutional mission for inclusive excellence, honoring intellectual pluralism, cultivating a climate that supports human development, growth, and innovation as cornerstones of our academic work.

Fall Term Initiatives

This fall, the Office of Student Life and Thriving led by Dr. Cherjanét Lenzy (clenzy@fielding.edu) collaborated with the VPIE to provide a shared learning experience centered on gender identity. Dr. Alden Jones conducted two workshops to deepen faculty understanding of the history, current issues, and the importance of language in discussions of gender identity. Additionally, Dr. Jones led a university-wide session titled "LOL—Living Online," which explored the nuances of building digital communities, the impact of time and space in online interactions, and how emotions and expressions are conveyed in digital environments. These sessions were not recorded.

Indigenous Peoples' Day Commemorations

In honor of Indigenous Peoples' Day, VPIE hosted two presentations by prominent scholars in Indigenous knowledge: Dr. Mathias Risse from Harvard and Dr. Lara Jacobs (Mvskoke, Chahta) from

Michigan State University. Dr. Risse discussed his upcoming book, slated for publication in 2025, which explores the integration of Indigenous thought into 21st-century research, practice, and everyday life. Dr. Jacobs focused on Indigenous Traditional Ecological Knowledge, offering insights into an edited volume she is curating that highlights Indigenous scholars and their contributions to knowledge production. Recordings of these insightful presentations are available [here](#).

Veterans Day Programming

Veterans Day provided a platform for three distinguished scholars in the field of veterans' research:

- **Caroline Miller, MA:** Discussed her experiences as a woman in the military and explored gendered trends and challenges, along with clinical responses.
- **Captain Megan A. Hager:** Addressed gender-based barriers in treatment for female veterans, highlighting unique trends in contemporary clinical care.
- **Shaina Townsend, Ph.D.:** Reflected on how her military experience shaped her clinical career and discussed barriers to social support that practitioners should consider.

These presentations offered in-depth perspectives on the challenges faced by women in the military. The session recordings can be accessed [here](#).

Pre-Election Conversations

In collaboration with the Kettering Foundation, Fielding faculty members Dr. Keith Melville (kmelville@fielding.edu) and President Katrina Rogers (kr Rogers@fielding.edu), along with Dr. Laurence Habib (laurence@oslomet.no) from Oslo Metropolitan University and Dr. Philipp Kneis (Philipp.kneis@oregonstate.edu) from Oregon State University, hosted pre-election discussions. Special guest Dr. John Dedrick (jdedrick@fielding.edu) from the Kettering Foundation also joined the conversation. Titled *Democracy at a Crossroads: Navigating Threats, Building Bridges, and Building a Resilient Future*, the event provided an opportunity for the Fielding community to reflect on the current political landscape and explore pathways to support inclusive democracy. You can view the discussion [here](#).

Global Inclusion Impact Awards

Fielding hosted its inaugural *Global Inclusion Impact Awards* on Dec. 5. These institutional awards recognized members of the Fielding community for their contributions to advancing human rights, inclusive excellence, and democracy, both nationally and globally. The event included an address by President Rogers. Thank you for joining us to celebrate these remarkable achievements within our Fielding community!

Learn more about the awards and winners [here](#).

Share Your Success!

We would love to feature you and your work in this newsletter and other Fielding communications! Please send your news and accomplishments to communications@fielding.edu.

We would also love to hear your feedback for future issues of this monthly newsletter!

communications@fielding.edu

Fielding Graduate University

2020 De La Vina St
Santa Barbara, CA 9310



You received this email because you are a current Fielding student or university employee.

[Unsubscribe](#)